

# WHO ARE WE?



WWW.PEELNEWCOMER.ORG

PNSG is the Local Immigration Partnership (LIP) in Peel designed to develop a coordinated and integrated settlement services model to enhance the social and economic inclusion of newcomers, immigrants and refugees to the Peel community. As a community collaborative, PNSG actively engages and brings together multiple stakeholders from all sectors to address the need of newcomers, immigrants and refugees.

Function >> champion / integrate / lead / research / plan

# QUICK

# FACTS



[www.peelnewcomer.org](http://www.peelnewcomer.org)

Stay connected:  
[@PeelNewcomer](https://twitter.com/PeelNewcomer)

Follow Us:  
[peel\\_newcomer](https://www.instagram.com/peel_newcomer)

The online resource shares newcomer specific data and an interactive map of Peel. Learn more at [www.peelnewcomer.org/npi](http://www.peelnewcomer.org/npi)

>> Enhance outreach, program planning and implementation

>> Identify location and complexities of refugee services

>> Compare both immigrant and non-immigrant populations across the region

>> Data on languages, poverty levels, education levels, ethnicities, and housing of newcomers

### Newcomer Profile Tool:

PNSG, in collaboration with the Peel Data Centre at the Region of Peel, have made it easy to navigate services in your community with the

# YOUR FINGERTIPS

INFORMATION AT

>> Improve coordination of services that facilitate settlement and integration processes

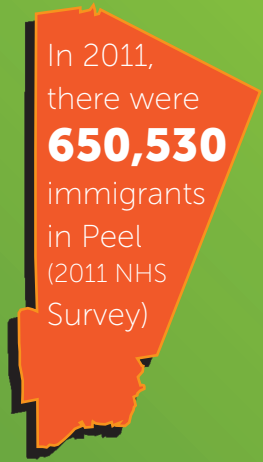
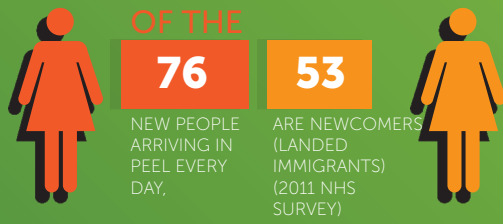
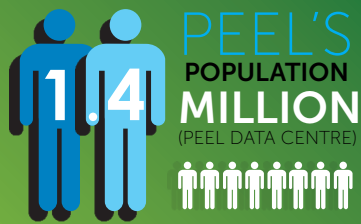
>> Support community-based knowledge sharing and local strategic planning

>> Foster local engagement of service providers and other institutions with newcomers

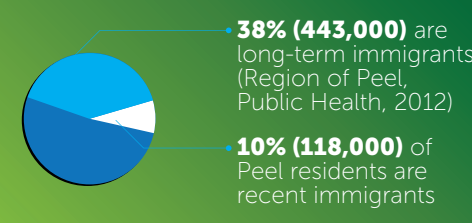
Local Immigration Partnerships (LIPs) are community-based partnerships that aim to:

# A TIP?

WHAT'S

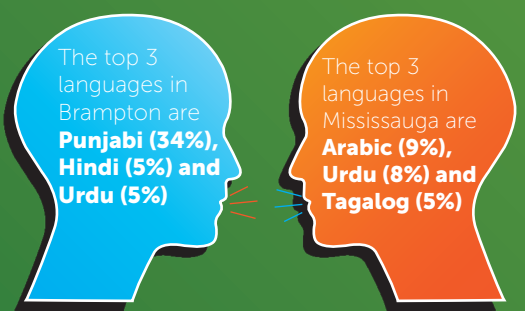


**2003** BETWEEN 2003-2012, PEEL HAD WELCOMED OVER **14,000 (14,890)** REFUGEES WITH THE MAJORITY OF THEM MAKING MISSISSAUGA HOME **9,830** (2011 NHS SURVEY & CIC 2012 DATA CUBE) **2012**

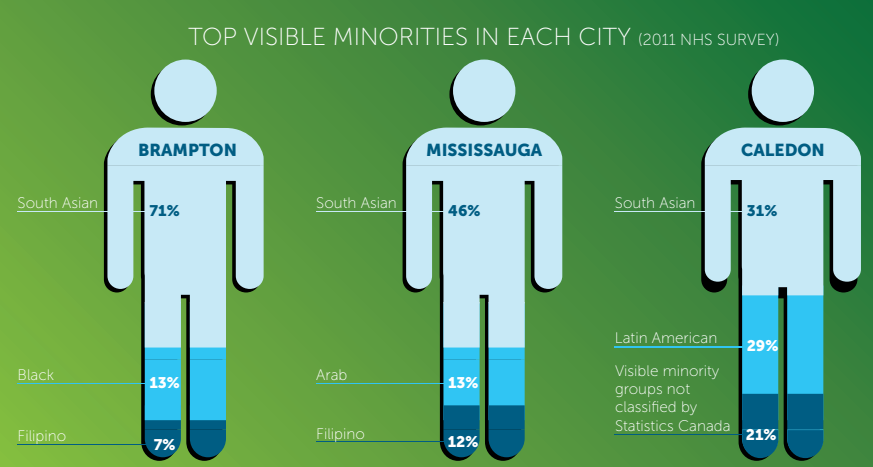


**MISSISSAUGA IS THE THIRD MOST ATTRACTIVE CANADIAN CITY**

(AFTER MONTREAL AND TORONTO) FOR RECENT IMMIGRANTS BORN IN SYRIA. (2011 NHS SURVEY)



TOP 3 LANGUAGES SPOKEN BY NEWCOMERS IN EACH CITY  
Newcomer specific data in Caledon is unavailable at this time (2011 NHS)



SOUTH ASIAN IS THE NUMBER ONE REPORTED VISIBLE MINORITY IN MISSISSAUGA, BRAMPTON AND CALEDON



**THE TOP HOME LANGUAGES IN PEEL ARE:**

**PUNJABI IN BRAMPTON (49%)**  
**URDU IN MISSISSAUGA (11.5%)**  
**ITALIAN IN CALEDON (30.9%)**

